

3M

Volition™

Copper Cabling System

Category 6

Structured Cabling System

Make the Most

of Your Network



The 3M™ Volition™ Category 6 Cabling System

Our high-end copper cabling system is a complete solution consisting of patch panels, patch cords, jacks, cables and faceplates that offer superior performance.

Incorporating all the features you have come to expect from 3M, the Category 6 Copper Cabling System based on the K6 RJ45 jack offers true Category 6 hardware performance.* This goes far beyond the typically offered and limited Class E/Category 6 link performance components on the market.

The level of performance required by the Cat. 6 hardware standard has been so high that installers needed high levels of skill and a lot of time for the system to work correctly.

Now, thanks to the technology, the 3M™ Volition™ K6 RJ45 jack can be installed quickly, without tools and meets the stringent performance requirements of Category 6.

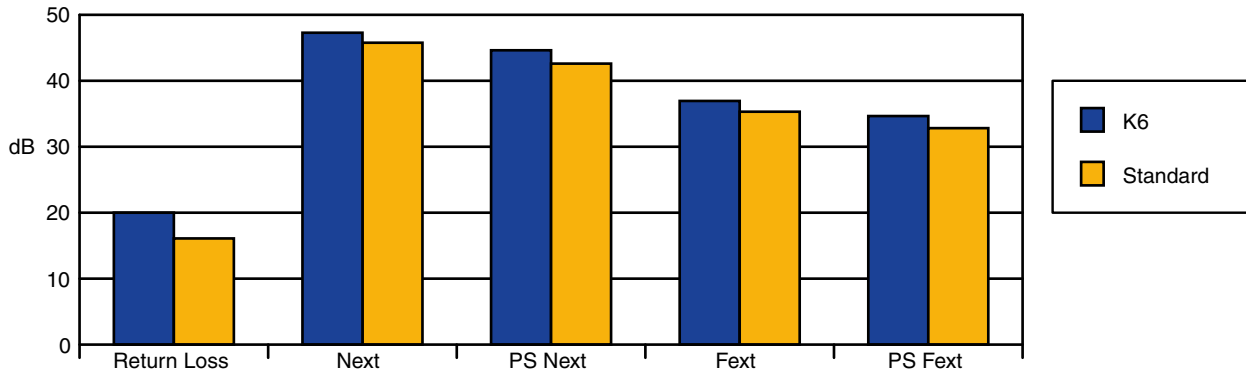
Category 6 provides a network infrastructure that has two and a half times more bandwidth than the Category 5e standards.

Category 6 offers genuine benefits for the future. The 3M™ Volition™ Cat. 6 cabling system will give you a fully backward compatible structured cabling system, allowing you to expand your existing Cat. 5e system or build a new network for the future.

The new 3M K6 jack represents the fourth generation of tool-less termination jacks from 3M. With tens of millions of jacks installed since 1994, you can be assured of its reliability.



K6 Jack: Margin Over Standard at 250 MHz



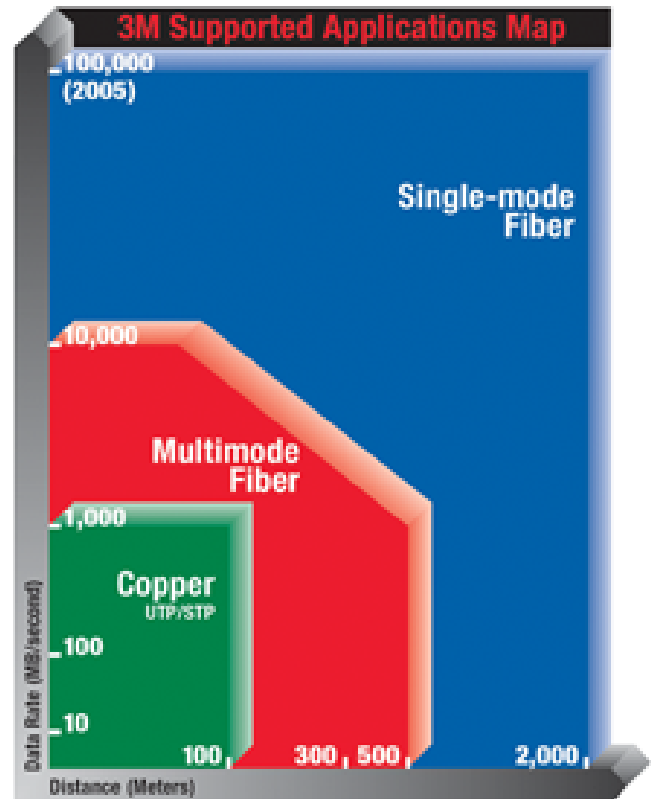
Technical support is available from 3M's worldwide technical service organization including:

- certified installer training
- network design support
- on-site installation support

3M offers complete solutions for copper, fiber or hybrid optic networks, ensuring a clear path for broadband migration with minimal upheaval.

No matter where your network is going, 3M can get you there. Whatever your migration path to broadband networks for voice and bandwidth-intensive applications in a building or campus environment, 3M will assist you in building the most efficient, reliable and cost-effective solution.

Volition Network Solutions includes copper, multimode and single-mode fiber products that can be used in combination for virtually every application.



3M™ Volition™ Category 6 K6 RJ45 Jack

The 3M™ Volition™ K6 RJ45 jack design guarantees consistent and repeatable results. The K6 jack can be reused many times.

The integral shutter protects the contacts from dirt and dust and ensures reliability.

Associated with the Volition K6 RJ45 jack are system components and accessories (e.g. cable, patch cords, outlets, patch panels...) optimized for maximum system performance and reliability.

The new K6 jack is our ultimate Cat. 6 hardware component (ISO/IEC 11801 and ANSI/TIA/EIA-568B.2-1), with Keystone mounting. The K6 jack is a core product in our system solution, which includes a comprehensive range of Keystone patch panels, sockets and faceplates, Cat. 6 patch cords and cables.

Performance:

- Real Category 6 hardware performance.
- Significantly exceeds Category 6/CLASS E link performance requirements.

Tool-less jack:

- Easy and quick to install.
- Fast reliable connection in record time; all 8 copper conductors are effortlessly terminated in a single operation.
- Quality of connection by design; independent of tool condition or operator skill; just listen for the click.
- Consistent results. The length of untwisted pairs and the length between the end of the conductor and the IDC contacts are always kept to a minimum, by design.

Reusable:

- If a wiring mistake is made there is no need to use a new jack. Just open and terminate.
- No delay waiting for another delivery.



Shallow depth, cable entry from top or bottom:

- Easier cable management.
- More space and flexibility to ensure the cable minimum bend radius is never compromised.
- Allows a wide range of cable routing options.
- Can be used with low-profile raceway and boxes.

Accepts both solid and stranded conductors from 26 to 22 AWG:

- Compatible with all cables on the market and enables 'jack to plug' cables to be manufactured using stranded conductors (for use in open office spaces).

Integral shutter:

- Increased dust protection, especially during installation or in a dirty environment.
- No additional shuttering required on faceplates.
- Higher port density.
- Allows direct mounting into floor boxes.
- Protects jacks in the patch panel.

Specifications**Technical Characteristics****RJ45 Category 6 Hardware test result (Typical values)**

| | | | |
|--------------------------------|---|----------|----------|
| Lead-through resistance | 17 mΩ < to <20 m Ω | | |
| Insulation resistance | > 10 mΩ | | |
| Frequency | 100 MHz | 200 MHz | 250 MHz |
| Attenuation | < 0.2 dB | < 0.2 dB | < 0.3 dB |
| Return Loss | 24 dB | 18.5 dB | 16 dB |
| NEXT pair to pair | 58 dB | 50 dB | 47.5 dB |
| Conductor diameter | 0.50 mm to 0.65 mm solid copper, 7 x 0.15 to 0.20 mm stranded cable | | |
| Sheath diameter | 1.6 mm max | | |

Permanent Link Class E Test Result (Typical results)

| | Attenuation | NEXT | ELFEXT | Return Loss |
|------------------|--------------------|-------------|---------------|--------------------|
| Value | 29.5 dB | 43.4 dB | 22.2 dB | 25.3 dB |
| Margin | 1.0 dB | 8.1 dB | 5.9 dB | 4.3 dB |
| Frequency | 250 MHz | 250 MHz | 250 MHz | 4 MHz |

Ordering Information

| Model Number | Description | Minimum Order Quantity | Packaging |
|---------------------|--------------------|-------------------------------|------------------|
| VOL-OCK6-U | K6 RJ45 Jack UTP | 1 box | 96/box |

3M™ Volition™ Modular Keystone Faceplates

The modular style faceplate is designed to accommodate the 86 x 86 BS faceplate openings. The modules are available in two versions:

- 86 x 86 mm, 1 port
- 86 x 86 mm, 2 ports

A label holder and a white application icon present a smart and functional appearance (colored icons are available separately).

Features

- Aperture for keystone mounting jacks.
- Flat surface mounting.
- Shutter integrated into the jack.
- Mounting mechanism allows correct positioning in both vertical and horizontal raceway or boxes.



Benefits

- Universally accepted mounting standard.
- Reduced tension impact.
- Increased dust protection, especially during installation phase or industrial environment.
- Fits in all boxes and raceway suitable for 86 x 86 mm BS footprint.
- No need for additional raceway or boxes to accommodate the jacks.

Ordering Information

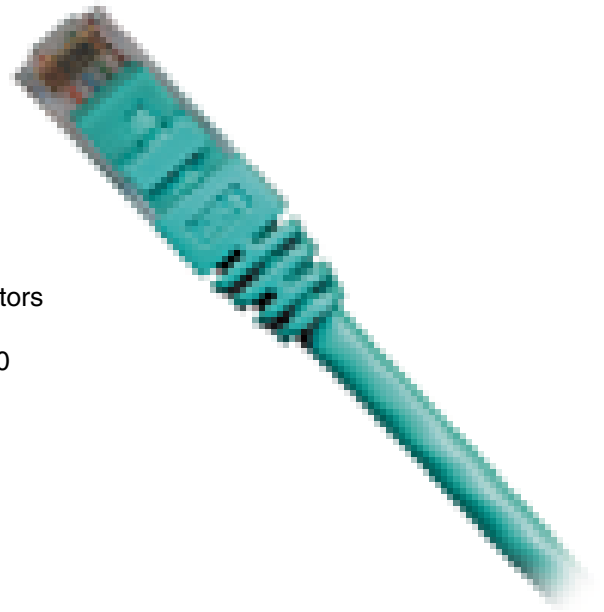
| Model Number | Description | Minimum Order Quantity | Packaging |
|--------------|--|------------------------|------------|
| VOL-FPBS-1 | Faceplate 86 x 86 For 1 Keystone jack | 1 carton | 200/carton |
| VOL-FPBS-2 | Faceplate 86 x 86 For 2 Keystone jacks | 1 carton | 200/carton |

3M™ Volition™ UTP Cat. 6 RJ45 Patch Cords

Cat. 6 patch cords allow you to complete your Cat. 6 system to EIA/TIA 568B.2-1 or ISO 11801 Class E. They are compliant with Flame Retardant standard IEC 60332-1.

Features

- 3M branded
- ETL verified Category 6 link component
- Molded boot
- 4 pairs of flexible multi-stranded copper conductors
- Polyethylene conductor insulation to NFC 32060



Benefits

- Optimization with 3M Volition K6 RJ45 jacks
- Offers best channel performance
- Better mechanical protection
- Ensures the minimum bend radius is not exceeded
- Available in 1, 2, 3, and 5 m lengths

Ordering Information

| Model Number | Description | Minimum Order Quantity | Packaging |
|--------------|----------------------------|------------------------|-----------|
| VOL-PC601 | Cat 6 Patch Cable 1 meter | 1 bag | 1/bag |
| VOL-PC602 | Cat 6 Patch Cable 2 meters | 1 bag | 1/bag |
| VOL-PC603 | Cat 6 Patch Cable 3 meters | 1 bag | 1/bag |
| VOL-PC605 | Cat 6 Patch Cable 5 meters | 1 bag | 1/bag |

3M™ Volition™ Keystone Patch Panel

3M™ Volition™ Classic and Economic Patch Panels are modular and allow precise mounting and clean presentation of the keystone jack.

Classic versions:

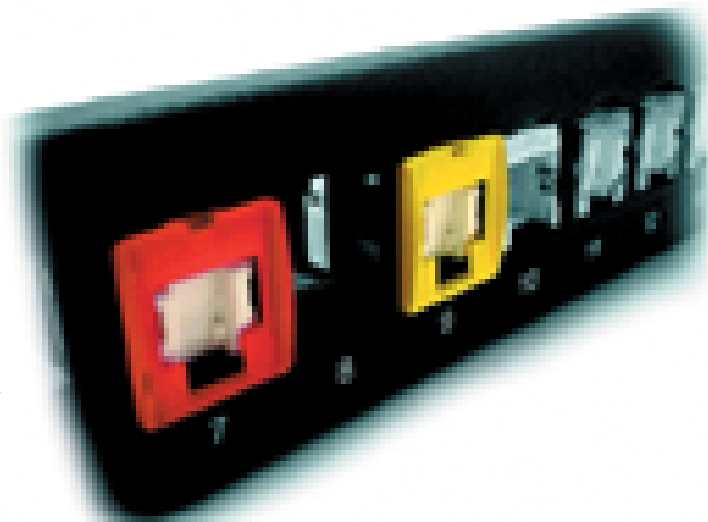
- Include cable trays
- Automatically provide grounding connection to jack upon insertion into patch panel
- 16 and 24 ports 1U, 32 and 48 ports 2U
- black aluminum finish

Economic versions:

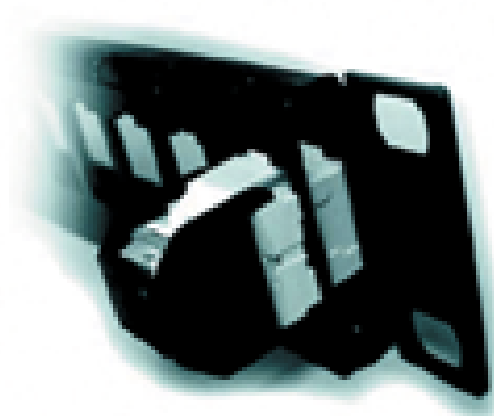
- 16 and 24 ports 1U, black steel
- All patch panel versions are delivered unloaded

Accessories:

- Port blanking
- Color identification caps



Classic and Economic



Ordering Information

| Model Number | Description | Minimum Order Quantity | Packaging |
|---------------|---|------------------------|-----------|
| VOL-PPCB-F16K | Classic Patch Panel 16 Keystone jacks Black Alu | 1 box | 1 / box |
| VOL-PPCB-F24K | Classic Patch Panel 24 Keystone jacks Black Alu | 1 box | 1 / box |
| VOL-PPCB-F32K | Classic Patch Panel 36 Keystone jacks Black Alu | 1 box | 1 / box |
| VOL-PPCB-F48K | Classic Patch Panel 48 Keystone jacks Black Alu | 1 box | 1 / box |
| VOL-PPUD-F16K | Economic Patch Panel UTP 16 Keystone jacks | 1 box | 1 / box |
| VOL-PPUD-F24K | Economic Patch Panel UTP 24 Keystone jacks | 1 box | 1 / box |
| VOL-PCC-B | Port Color Cap Blue | 10 set | 8 / set |
| VOL-PCC-G | Port Color Cap Green | 10 set | 8 / set |
| VOL-PCC-R | Port Color Cap Red | 10 set | 8 / set |
| VOL-PCC-Y | Port Color Cap Yellow | 10 set | 8 / set |

Features

- Compatible with jacks having keystone mounting, optimized for the Volition jacks.
- Dust protected ports when loaded with Volition keystone jacks.
- Compact modular patch panel with 16, 24, 32 and 48 port options.
- Cable retention tray (Classic versions).
- Increased labeling facilities, port-by-port for black aluminum versions, meeting EIA/TIA 606 requirements.
- Delivered with screws, cage nuts and cable ties.

Benefits

- Fully shuttered patch panel presentation with the Cat. 6 jacks.
- Increased dust protection especially during installation phases or in industrial environments.
- Cost effective with high port density. Easier and less expensive maintenance with port-by-port management and replacement.
- Good cable management to ensure bending radius control.
- Configurations to suit nearly any need.
- Ready to install; no hidden expenses.

3M™ Volition™ Cat. 6 110 Punch-Down Patch Panels

3M™ Volition™ 110 punch-down style patch panels are available in 24-port (1U) and 48-port (2U) configurations to provide high density and feature easy-to-use write-on labels for port labeling. T568 A/B wiring labels reduce inventories and eliminate improper terminations. The Volition™ panels are designed to maximize signal integrity and performance throughout the gigabit Ethernet range.

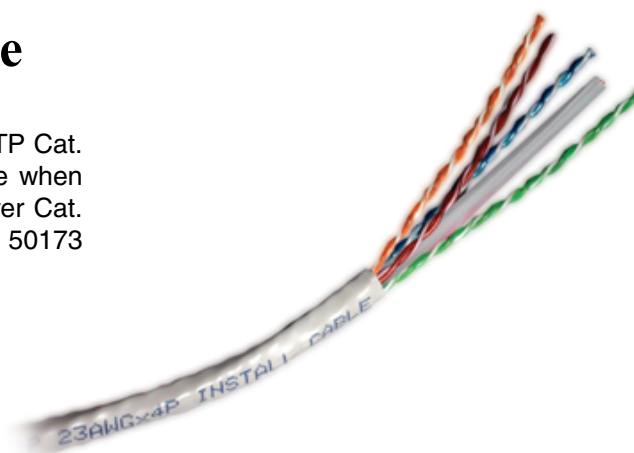


Ordering Information

| Model Number | Description | Minimum Order Quantity | Packaging |
|--------------|---|------------------------|-----------|
| VOL-PP624B | Patch Panel Cat. 6 110 Contact UTP 568A/B 24 Port Black | 1 box | 1/box |
| VOL-PP648B | Patch Panel Cat. 6 110 Contact UTP 568A/B 48 Port Black | 1 box | 1/box |

3M™ Volition™ Cat. 6 Cable

Belonging to the 3M copper cable portfolio, this UTP Cat. 6 cable is part of our superior performance range when used with our K6 jacks, giving highest margins over Cat. 6 EIA/TIA 568B.2-1, Class E ISO 11801 and EN 50173 standards.



Specifications

Technical Characteristics

| FREQ (MHZ) | INSERTION LOSS (dB/100m) | | NEXT (dB/100m) | | ACR* (dB/100m) | PS-NEXT (dB/100m) | | PS-ACR* (dB/100m) | ELFEXT (dB/100m) | PS-ELFEXT (dB) | SRL (dB) | RL (dB) |
|---------------|-----------------------------|------|-------------------|------|-------------------|----------------------|------|----------------------|---------------------|-------------------|-------------|------------|
| | avg | max | avg | min | min | avg | min | min | min | min | min | min |
| 0.772 | 1.7 | 1.8 | 80 | 77.0 | 74.2 | 77 | 74.0 | 72.2 | 71.0 | 68.0 | 26.0 | - |
| 1.0 | 1.9 | 2.0 | 79 | 75.3 | 72.3 | 75 | 72.3 | 70.3 | 68.8 | 65.8 | 26.0 | 21.0 |
| 4.0 | 3.6 | 3.8 | 70 | 66.3 | 61.5 | 66 | 63.3 | 59.5 | 56.8 | 53.8 | 26.0 | 24.0 |
| 8.0 | 5.1 | 5.3 | 65 | 61.8 | 55.5 | 62 | 58.7 | 53.4 | 50.7 | 47.7 | 26.0 | 25.5 |
| 10.0 | 5.7 | 6.0 | 63 | 60.3 | 53.3 | 60 | 57.3 | 51.3 | 48.8 | 45.8 | 26.0 | 26.0 |
| 16.0 | 7.3 | 7.6 | 60 | 57.2 | 48.6 | 57 | 54.2 | 46.6 | 44.7 | 41.7 | 26.0 | 26.0 |
| 20.0 | 8.1 | 8.5 | 59 | 55.8 | 46.3 | 56 | 52.8 | 44.3 | 42.8 | 39.8 | 26.0 | 26.0 |
| 25.0 | 9.1 | 9.5 | 57 | 54.3 | 43.8 | 54 | 51.3 | 41.8 | 40.8 | 37.8 | 25.3 | 25.3 |
| 31.25 | 10.2 | 10.7 | 56 | 52.9 | 41.2 | 53 | 49.9 | 39.2 | 38.9 | 34.9 | 24.6 | 24.6 |
| 62.5 | 14.8 | 15.4 | 52 | 48.4 | 32.0 | 48 | 45.4 | 30.0 | 32.9 | 29.9 | 22.5 | 22.5 |
| 100.0 | 19.0 | 19.8 | 48 | 45.3 | 24.5 | 45 | 42.3 | 22.5 | 28.8 | 25.8 | 21.1 | 21.1 |
| 155.0 | 24.2 | 25.2 | 46 | 42.4 | 16.2 | 42 | 39.4 | 14.2 | 25.0 | 22.0 | 19.8 | 19.8 |
| 200.0 | 27.8 | 29.0 | 44 | 40.8 | 10.8 | 41 | 37.8 | 8.8 | 22.8 | 19.8 | 19.0 | 19.0 |
| 250.0 | 31.5 | 32.8 | 42 | 39.3 | 5.5 | 39 | 36.3 | 3.5 | 20.8 | 17.8 | 18.3 | 18.3 |
| 300.0 | 34.1 | 36.4 | 40 | 37.1 | - | 38 | 35.2 | - | 19.2 | 16.2 | 17.5 | 17.5 |
| 400.0 | 40.3 | 43.0 | 39 | 36.3 | - | 36 | 33.3 | - | 16.7 | 13.7 | 16.9 | 16.9 |

| | |
|-------------------------------|--|
| Maximal pulling tension | 25 lbf (110 N) |
| Minimum installed bend radius | 1" (25.4 mm) |
| Nominal weight | 25lbs/1000 ft. (33 kg/km) riser 26lbs/1000 ft. (39 kg/km) plenum |
| Temperature rating | |
| Operating | -34°C to +60°C (-30°F to +140°F) |
| Storage | -34°C to +75°C (-30°F to +167°F) |
| Installation | -20°C to +60°C (-4°F to +140°F) |

Electrical Characteristics

| | |
|--------------------------|----------------------------|
| Velocity (nom.) | 72% riser; 68% plenum |
| Characteristic impedance | 100Ω +/-15% (1 to 250 Mhz) |
| Mutual capacitance | 46pF/m (14pF/ft) |
| Propagation delay skew | <20 ns/100m |

Ordering Information

| Model Number | Description | Minimum Order Quantity | Packaging |
|--------------|----------------------------|------------------------|---------------|
| VOL-C6 | Cat. 6 4 Pair # 23 AWG UTP | 1 reel | 1000 ft./reel |

Important Notice

Before using this product, you must evaluate it and determine if it is suitable for your intended application. You assume all risks and liability associated with such use.

Warranty; Limited Remedy; Limited Liability.

This product will be free from defects in material and manufacture for a period of one year from the date of purchase. **3M MAKES NO OTHER WARRANTIES INCLUDING, BUT NOT LIMITED TO, ANY IMPLIED WARRANTY OF MERCHANTABILITY OR FITNESS FOR A PARTICULAR PURPOSE.** If this product is defective within the warranty period stated above, your exclusive remedy shall be, at 3M's option, to replace or repair the 3M product. **Except where prohibited by law, 3M will not be liable for any loss or damage arising from this 3M product, whether direct, indirect, special, incidental or consequential regardless of the legal theory asserted.**



3M Hong Kong Limited
3M Telecommunications

5th Floor, Victoria Centre
15 Watson Road, Hong Kong
Tel.: 852-2806 6111
Fax: 852-2234 6074
Website: www.3M.com/hk/telecom

3M, Volition and VF-45 are trademarks of 3M.

